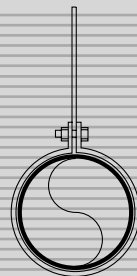
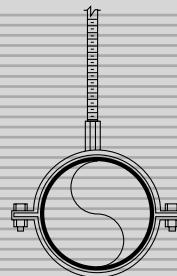
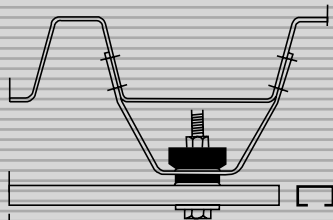
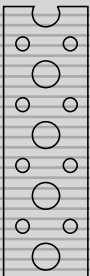


# Supports & Bands



# Supports & Bands

## Metal Clamps, Multiband Multiclamps &

## QIPBAND QIPCLAMP

General

Dampers

Silencers

Acoustic  
Enclosures

Plenum  
Boxes

Louvers

Kitchen  
Hoods

8  
2

Access  
Doors

Flexible  
Connectors

Flanges &  
Accessories

Tapes &  
Sealants

### QIP



### Construction

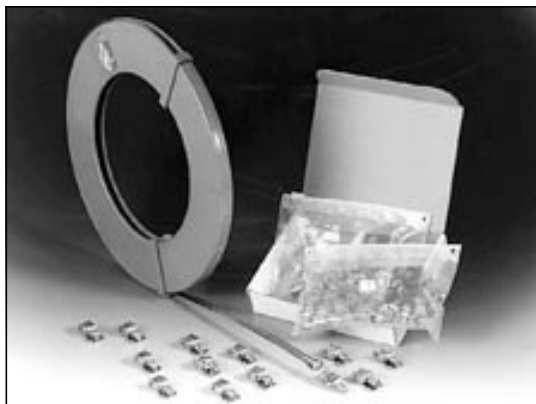
The Metal Clamp has been constructed according to DIN 3017 standards. The strip has been manufactured out of stainless steel (UNI x 8 Cr 17-DIN 1.4016 (W2) - AISI 430). The Clamp has been manufactured out of hardened galvanized steel.

The Metal Clamp is appropriate to mounting all kinds of flexible ducts.

Standard sizes available.

Duct Diameter	TYPE
QIP 165	60 to 165 mm
QIP 215	60 to 215 mm
QIP 270	60 to 270 mm

### Multiband/Multiclamps



### Construction

The Multiband has been constructed according to DIN 3017 standards. The strip has been manufactured out of stainless steel (UNI x 8 Cr 17-DIN 1.4016 (W2) - AISI 430) and the thickness is 0.6mm. The clamps, Multiclamp has been manufactured out of hardened galvanized steel.

The Multiband/Multiclamps are suitable for mounting all types of flexible connections. the combination Multiband/Multiclamp enables you to make clamp to suit any diameters required at the work station.

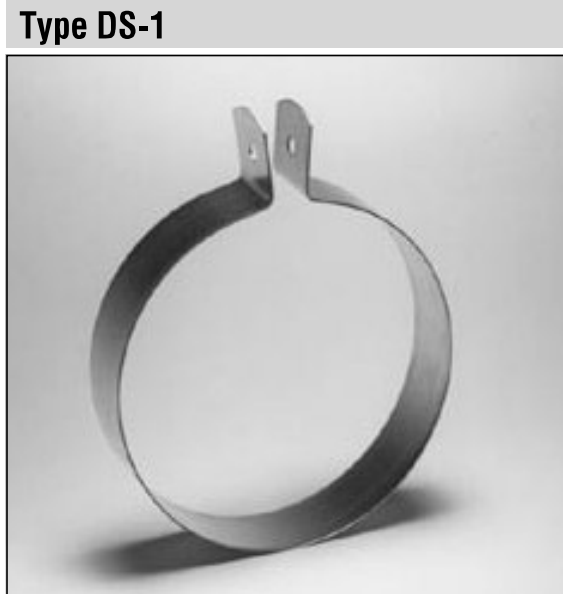
DESCRIPTION	TYPE
QIPBAND	- 30M per roll (1 box=10 rolls)
QIPCLAMP	- 50pcs per box (1 carton=10 boxes)

Right to alterations reserved.

# Supports & Bands

## Round Duct Support

## DS-1



**Description**

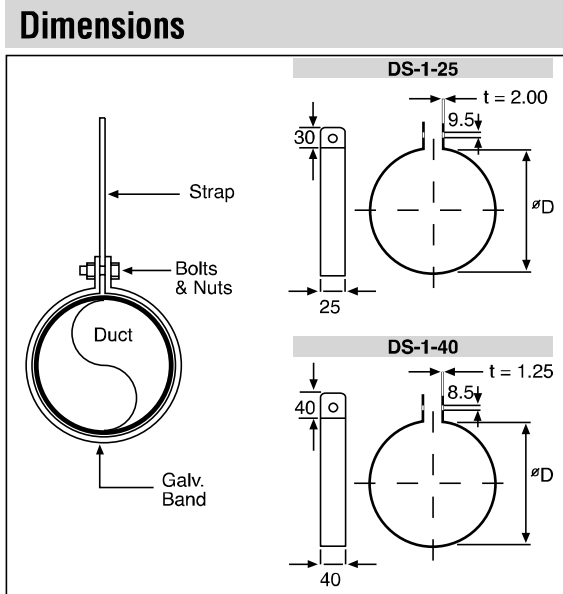
Round duct support type DS-1, made of galvanised steel sheets with two different widths of 25mm x 2mm thk. or 40mm X 1.2mm thk.

**Ordering**

Product code: DS-1-25 - aaa

Type \_\_\_\_\_

d<sub>1</sub> \_\_\_\_\_



DS-1-25		DS-1-40	
Dia mm	Support size	Dia mm	Support size
63	25 x 2mm	63	40 x 1.2mm
80	25 x 2mm	80	40 x 1.2mm
100	25 x 2mm	100	40 x 1.2mm
112	25 x 2mm	112	40 x 1.2mm
125	25 x 2mm	125	40 x 1.2mm
140	25 x 2mm	140	40 x 1.2mm
150	25 x 2mm	150	40 x 1.2mm
160	25 x 2mm	160	40 x 1.2mm
180	25 x 2mm	180	40 x 1.2mm
200	25 x 2mm	200	40 x 1.2mm
224	25 x 2mm	224	40 x 1.2mm
250	25 x 2mm	250	40 x 1.2mm
280	25 x 2mm	280	40 x 1.2mm
300	25 x 2mm	300	40 x 1.2mm
315	25 x 2mm	315	40 x 1.2mm

- General
- Dampers
- Silencers
- Acoustic Enclosures
- Plenum Boxes
- Louvers
- Kitchen Hoods
- 3 | 8
- Access Doors
- Flexible Connectors
- Flanges & Accessories
- Tapes & Sealants

Right to alterations reserved.

# Supports & Bands

## Round Duct Support

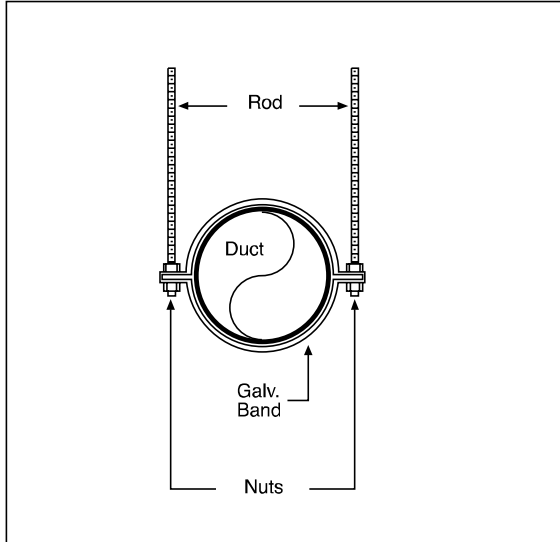
## DS-2

- General
- Dampers
- Silencers
- Acoustic Enclosures
- Plenum Boxes
- Louvers
- Kitchen Hoods
- 8**
- 4**
- Access Doors
- Flexible Connectors
- Flanges & Accessories
- Tapes & Sealants

### Type DS-2



### Dimensions



### Description

Round duct support type DS-2, made of steel plate supplied in 2 halves.

- Dia. Up to 315 = 30 x 3mm thk.
- Dia. Up to 800 = 30 x 4mm thk.
- Dia. Up to 1250 = 40 x 5mm thk.

### DS-2-30

Dia mm	Support Size
100	30 x 3mm
112	30 x 3mm
125	30 x 3mm
140	30 x 3mm
150	30 x 3mm
160	30 x 3mm
180	30 x 3mm
200	30 x 3mm
224	30 x 3mm
250	30 x 3mm
280	30 x 3mm
300	30 x 3mm
315	30 x 3mm
355	30 x 4mm
400	30 x 4mm
450	30 x 4mm
500	30 x 4mm
560	30 x 4mm
600	30 x 4mm
630	30 x 4mm
710	30 x 4mm
800	30 x 4mm

### Ordering

Product code: **DS-2-30 - aaa**

Type \_\_\_\_\_  
 d<sub>1</sub> \_\_\_\_\_

### DS-2-40

900	40 x 5mm
1000	40 x 5mm
1100	40 x 5mm
1250	40 x 5mm

Right to alterations reserved.

# Supports & Bands

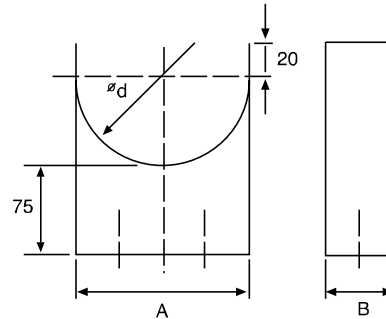
## Round Duct Support

## DS-4

### Type DS-4



### Dimensions



### Description

Round duct support type DS-4, made of galvanized steel sheet for wall mounting installation.

The DS-4 support can be fitted with a strap and a snap lock, thus preventing self tapping screws or rivets cutting into the ducts.

### DS-4

d mm	A mm	B mm
80	180	60
63	66	25
80	180	25
100	180	25
125	180	25
150	200	25
160	200	25
200	203	25
250	253	25
315	318	25
400	403	25
500	503	25
630	633	25

### Ordering

Product code: **DS-4 - aaa**

Type \_\_\_\_\_  
d<sub>1</sub> \_\_\_\_\_

General

Dampers

Silencers

Acoustic Enclosures

Plenum Boxes

Louvers

Kitchen Hoods

8  
5

Access Doors

Flexible Connectors

Flanges & Accessories

Tapes & Sealants

Right to alterations reserved.

# Supports & Bands

## Round Duct Support

## DS-3

General

Dampers

Silencers

Acoustic Enclosures

Plenum Boxes

Louvers

Kitchen Hoods

Access Doors

Flexible Connectors

Flanges & Accessories

Tapes & Sealants

### Type DS-3



### Description

Round duct support type DS-3, made of steel plate supplied in 2 halves with long nut on top for threaded rod connection.

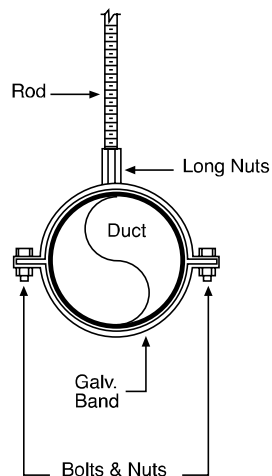
Dia. Up to 315 = 30 x 3mm thk.  
 Dia. Up to 800 = 30 x 4mm thk.  
 Dia. Up to 1250 = 40 x 5mm thk.

### Ordering

Product code: **DS-3-30 - aaa**

Type \_\_\_\_\_  
 d<sub>1</sub> \_\_\_\_\_

### Dimensions



### DS-3-30

Dia mm	Support Size
100	30 x 3mm
112	30 x 3mm
125	30 x 3mm
140	30 x 3mm
150	30 x 3mm
160	30 x 3mm
180	30 x 3mm
200	30 x 3mm
224	30 x 3mm
250	30 x 3mm
280	30 x 3mm
300	30 x 3mm
315	30 x 3mm
355	30 x 4mm
400	30 x 4mm
450	30 x 4mm
500	30 x 4mm
560	30 x 4mm
600	30 x 4mm
630	30 x 4mm
710	30 x 4mm
800	30 x 4mm

### DS-3-40

900	40 x 5mm
1000	40 x 5mm
1100	40 x 5mm
1250	40 x 5mm

Right to alterations reserved.

# Supports & Bands



## Duct Fixing Bracket

DS-5

Type DS-5	Dimensions

## Description

SAFID Duct fixing bracket, use for sound insulated suspensions of circular or square ducts. Suitable for use with all duct diameter and cross sections due to predetermined bending points. Easy fastening to the air duct with rivets or self drilling screws. Suspensions of the duct fixing bracket with threaded rods or direct fastening to the structure if possible. Installation is carried out in the usual way using threaded rods. This excludes the occurrence of a sonic bridge air duct or channel and structure.

- General
- Dampers
- Silencers
- Acoustic Enclosures
- Plenum Boxes
- Louvers
- Kitchen Hoods
- 8**  
**7**
- Access Doors
- Flexible Connectors
- Flanges & Accessories
- Tapes & Sealants

Right to alterations reserved.

# Supports & Bands



## Internal Round Duct Bracket

DS-6

### Type DS-6



General

Dampers

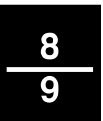
Silencers

Acoustic Enclosures

Plenum Boxes

Louvers

Kitchen Hoods



Access Doors

Flexible Connectors

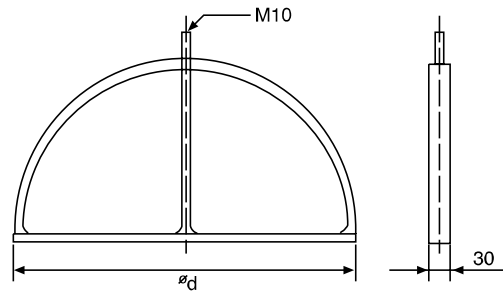
Flanges & Accessories

Tapes & Sealants

### Description

Internal Round duct bracket type DS-5, made of galvanized steel sheet for internal mounting installation.

### Dimensions



d  
nom

450  
500  
560  
600  
630  
710  
800  
900  
1000  
1120  
1250

### Ordering

Product code: **DS-6 - aaa**

Type \_\_\_\_\_  
d<sub>1</sub> \_\_\_\_\_

Right to alterations reserved.



# Supports & Bands

## Perforated Galvanized Band

## PG17/PG25

General

Dampers

Silencers

Acoustic Enclosures

Plenum Boxes

Louvers

Kitchen Hoods

8  
10

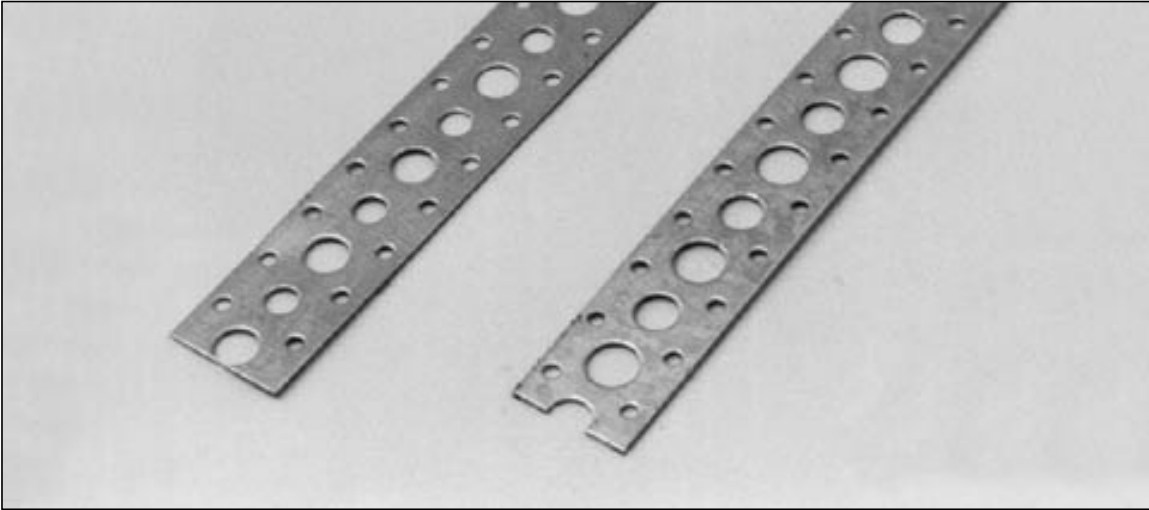
Access Doors

Flexible Connectors

Flanges & Accessories

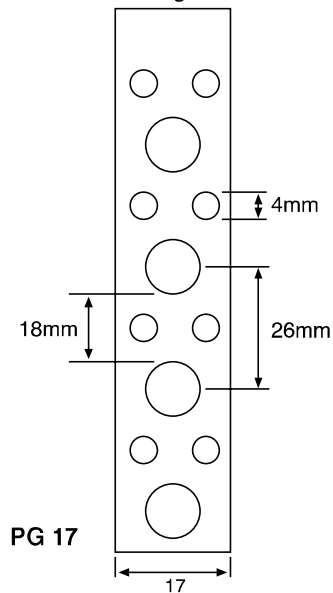
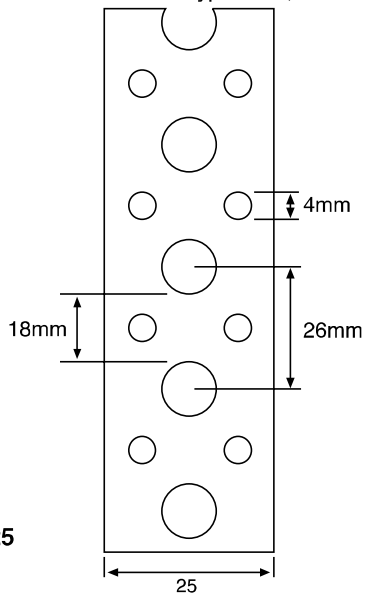
Tapes & Sealants

### Type PG17 & PG25



### Dimensions

Internal Round duct bracket type DS-5, made of galvanized steel sheet for internal mounting installation.



### Description

Perforated galvanized steel band.  
PG17 = 25M x 0.6mm thk.  
PG25 = 25M x 0.75mm thk.

### Ordering

Product code: **PG17**

Type \_\_\_\_\_

Right to alterations reserved.